

## Top Stories This Week

- Government mulls 49 percent FDI in insurance sector via automatic route -FDI through automatic route currently allowed up to 26 percent
- RBI tweaks strategic debt restructuring (SDR) norms -To allow to banks to invoke SDR With 26 percent ownership
- AB Nuvo sets up payments bank JV with Idea Cellular
- ONGC gets green panel nod for Rs 1,752 crore project in Gujarat: PTI
- BHEL bags \$1.6bn contract to build coal fired power plant in Bangladesh
- PNB Bank Declares Names Of 904 Borrowers As Wilful Defaulters that Owe `10,870 Cr As On December 31
- Dabur (ToI) to make Ayurvedic drugs for diabetes and malaria
- Asian Paints: Mauritius Unit Transfers 60% Stake In SCIB Chem To Berger International
- ONGC Gets Environment Nod For `758 Cr Tripura Drilling Project: PTI
- Tata Power Gets Forest Clearance For 52.50 MW Wind Power Project In Karnataka
- RCF To Acquire 11% Stake In Revival Of Sindri Unit Of FCI By Forming JV With Other PSUs

## Weekly Indices Change

Index	Close	Prev Close	Chg. (%)
SENSEX	23154	23709	-2.34
NIFTY	7029	7210	-2.51
MIDCAP	9572	9802	-2.35
SMLCAP	9555	9876	-3.25
METAL	6749	6872	-1.79
OIL&GAS	8339	8437	-1.16
AUTO	16024	16640	-3.70
TECK	5625	5752	-2.21
BANKEK	15647	16274	-3.85
IT	10449	10698	-2.33
FMCG	7107	7206	-1.37
HC	15172	15469	-1.92
PSU	5606	5754	-2.57
CD	11251	11566	-2.72
POWER	1599	1670	-4.25
CG	11467	11920	-3.80
REALTY	1048	1076	-2.60

## Global Indices

DOW	16639	16391	1.51
NASDAQ	4590	4504	1.91
FTSE	6096	5950	2.45
NIKKEI	16188	15967	1.38
HANGSENG	19364	19285	0.41

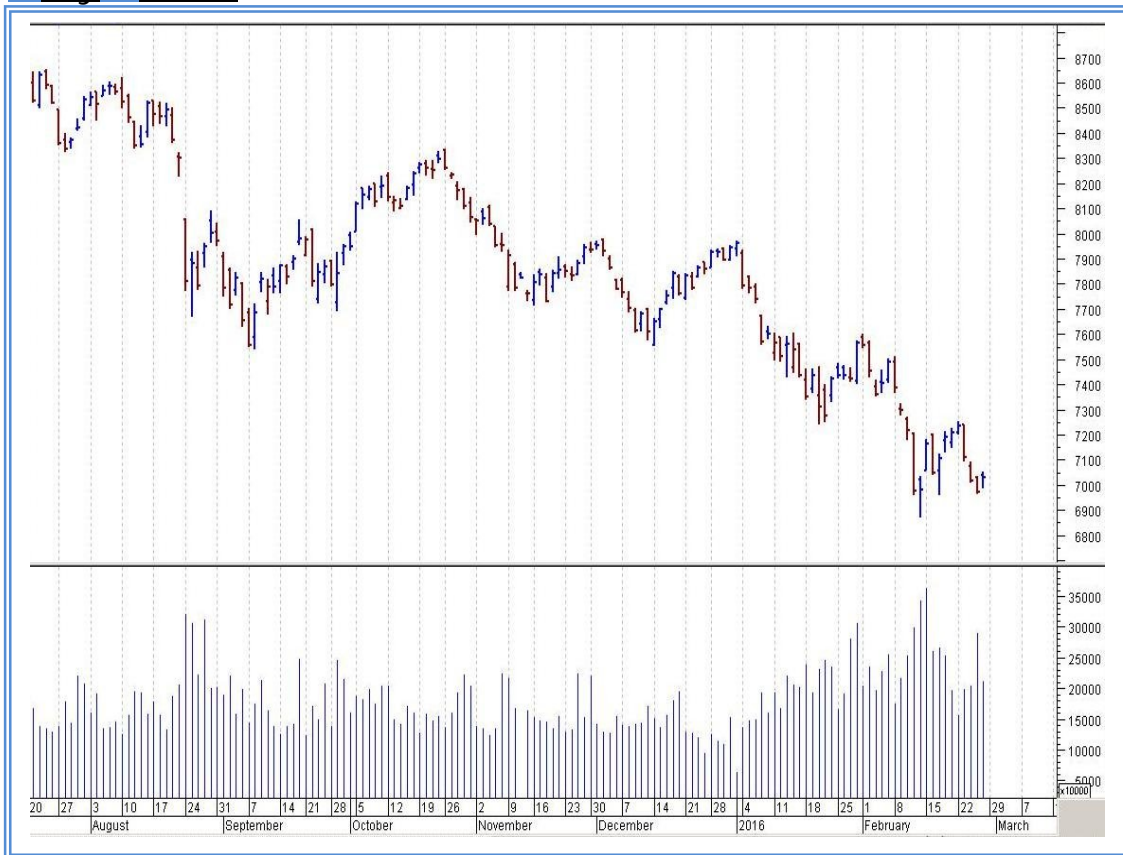
## Top Gainers Weekly

Scrip	Price	% Chg
Smartlink Network	101.60	33.42
BF Investment Ltd.	126.05	32.48
United Spirits Ltd.	2729.55	20.50
Central Bank	57.60	16.13
Arvind Infrastructure	80.10	13.14

## Top Losers Weekly

Scrip	Price	% Chg
Titagarh Wagons Ltd.	91.60	28.52
PC Jeweller Ltd.	324.10	18.04
Mahindra CIE Auto	164.45	16.40
Financial Technologies	73.10	14.45
Intellect Design	166.40	13.27

## Nifty Corner



Support & Resistance						
S3	S2	S1	Nifty	R1	R2	R3
6750	6800	6950	7029	7150	7200	7250
Moving Averages						
20DMA	50DMA	100DMA	200DMA			
7225	7485	7725	7985			

## Market Commentary

Key benchmark indices dropped in the week ended Friday, 26 February 2016, as investors maintained caution ahead of next week's Union Budget 2016-17. The Sensex regained psychological 23,000 level after falling below that mark during the week. The Nifty regained psychological 7,000 level after slipping below that mark during the week. The market fell in three out of five sessions of the week. For the next week Nifty likely to trade in the range between 7150 – 7250 in the upper side and 6950 – 6750 in the lower side.

Stocks at 52 wk High

Scrip	Cmp
Marico	237.55
--	--
--	--
--	--
--	--

Stocks at 52 wk Low

Scrip	Cmp
ACC	1190.90
Dish TV	67.40
Grasim	3300.60
ICICI Bank	184.80
Maruti Suzuki	3409.20

FII Activity

Date	Figures in crore
22/02	-656.93
23/02	-289.66
24/02	-730.99
25/02	-1465.68
26/02	-695.37
NET	-3838.63

DII Activity

Date	Figures in crore
22/02	597.87
23/02	257.93
24/02	605.88
25/02	806.97
26/02	784.14
NET	3052.79

Weekly Stock Idea

Scrip	B/S	Cmp	Tgt
LICHSGFIN	B	409	435
DHFL	B	152	165
RECLTD	B	156	165
ABAN	B	160	185
SUVEN	B	150	175

Buy on dips & Sell on rise with Stop-loss of 3%

Volume Breakout Stocks

Scrip	Cmp
PC Jeweller	324.10
Granules India	106.30
LT Foods	194.70
Smartlink Network	101.60
Ipca Labs	571.30

Week Ahead

MAJOR RESULTS/AGM MEETING THIS WEEK:

29 FEB: VIDEOIND, BFUTILITIE

**VISIT US AT: [WWW.INDIRATRADE.COM](http://WWW.INDIRATRADE.COM)**

**Disclaimer**

This report is for private circulation within the Indira Group. This report is strictly confidential and for information of the selected recipient only and may not be altered in any way, transmitted to, copied or distributed, in part or in whole, to any other person or to the media or reproduced in any form. This report should not be construed as an offer or solicitation to buy or sell any securities or any interest in securities. It does not constitute a personal recommendation or take into account the particular investment objectives, financial situations, or any such factor. The information, opinions estimates and forecasts contained here have been obtained from, or are based upon, sources we believe to be reliable, but no representation of warranty, express or implied, is made by us to their accuracy or completeness. Opinions expressed are our current opinions as of the date appearing on this material only and are subject to change without notice.